

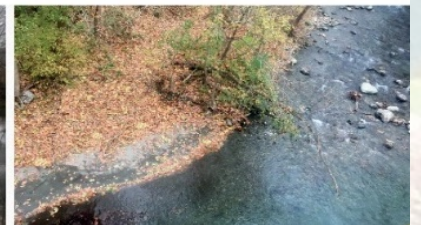
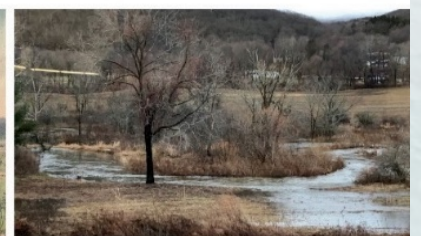
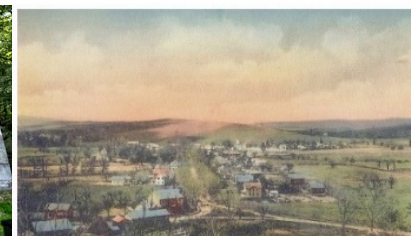
# Copake Waterfront and Community Revitalization Plan *for the Bash Bish Brook, Roe Jan Kill & Taghkanic Creek*

## COMMUNITY WORKSHOP

### CATALYSTS & PRIORITY PROJECTS

FEBRUARY 13, 2021

10:00 AM to 11:30 AM



*This waterfront revitalization project is funded by the New York State Department of State under Title 11 of the Environmental Protection Fund.*





# Catalysts and Priority Projects

## WELCOME

Jeanne Mettler, Town Supervisor

## INTRODUCTIONS & UPDATE

Roberta Roll, Project Advisory  
Committee Chair

## AGENDA

- Partners and Progress
- Our New Normal
- Opportunities and Challenges
- Community Profile
- Vision and Goals
- Catalysts and Priority Projects
- Discussion

## PROJECT ADVISORY COMMITTEE MEMBERS

- Roberta Roll
- Andy Fisher
- Alan Friedman
- Jeffrey Judd
- Peter Kelly

## NYS DEPARTMENT OF STATE

- Fred Landa, Coastal  
Resources Specialist

## RIVER STREET PLANNING

- Margaret Irwin, Principal
- Christina Snyder, Planner
- Ryan Miller, Community  
Engagement





# Let's Recap Progress

- Builds on Years of Committee Work
- PAC and Working Group Meetings
- Surveys
- Community Profile, Vision & Goals
- **Catalysts and Projects**
- Implementation Matrix
- Finishing the Plan – March 31, 2021
- Strengthening Partnerships
- Leveraging Best Odds Projects

## HOW DID WE GET HERE?

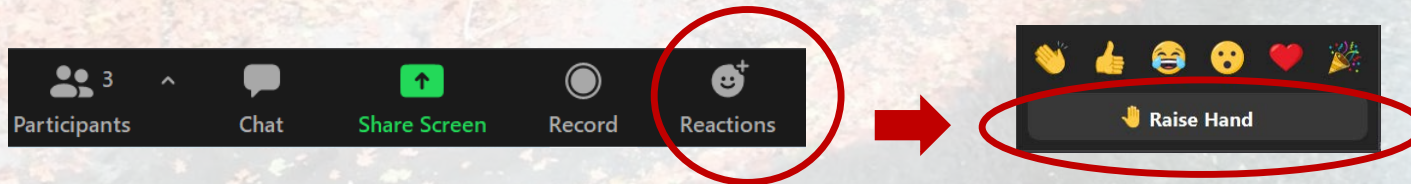
- Copake secured passage of **legislation** to add the Roe Jan, Bash Bish and Taghkanic Creek to the NYS Inland Waterway List
- **Opens opportunities** for funding for project feasibility analysis, design and implementation
- Note that Copake Lake is very important, but not a designated inland waterway





# Engaging Through Zoom

- We're so excited to be able to meet with you online!
- How to engage with speakers:
  - Use the 'raise hand' function to get our attention!

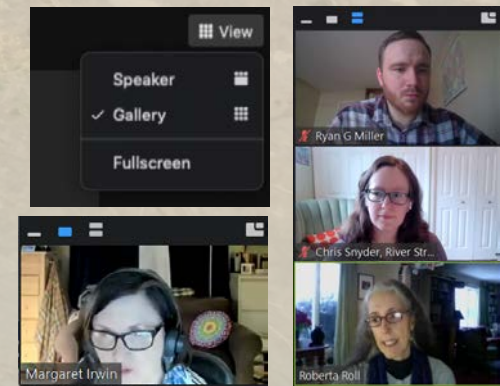


OR

- Use the chat function to send me (Ryan Miller) any question for the speakers. I am monitoring the chat and will ask the speakers on your behalf!
- Please keep your microphone muted when you are not speaking
- If you are experiencing any issues interacting with us, please message me in the chat! I am here to answer your questions!

## ZOOM "VIEWS"

The "View" menu at the top-right lets you switch from Speaker Mode (left) to Gallery Mode (right)





# Goal: A unified Waterfront Revitalization Plan that:

- Considers **many recent strategies**
- Draws from dozens of **recommended projects**, programs and policies
- Reflects current **community input** and
- Highlights projects with **best odds** of benefitting people, leveraging partnerships and securing funds

We'll discuss six catalyst projects that we believe will improve quality of life in the near term

See the website to review more projects and give input through surveys or by emailing us at [copakewaterfronts@gmail.com](mailto:copakewaterfronts@gmail.com)

## Partial List of Integrated Plans

Roe Jan Kill Headwaters Stream Crossing Plan (2019)

Columbia County Hazard Mitigation Plan (2018)

Natural Resources Inventory Columbia Cty. (2018)

Master Plan for The Taconic State Park (2018)

Trails Plan for Taconic State Park (2018)

Harlem Valley Rail Trail Plan (2016)

NYS Open Space Conservation Plan (2016)

Habitat Management Plan for Doodletown Wildlife Management Area (2016 -2027)

Water Resource Summary (March 2014)

Habitat Summary for The Town of Copake (2014)

Climate Resilience Summary (2014)

NYS Outdoor Recreation Plan (SCORP)

Copake Hamlet Development Plan (2015)

Comprehensive Plan (2011)

Groundwater Resources Protection Plan (2009)

The Hudson River Estuary Wildlife and Habitat Conservation Framework (2006)





# Our New Normal

- Its uncertain when State and Federal governments and foundations will return to “**grantmaking as usual**” given the unprecedented needs and fiscal crisis they face caused by COVID-19
- Copake’s Plan leads with **six best odds projects** that:
  - ✓ **Are catalysts:** accelerate community health and quality of life
  - ✓ **Build equity:** benefit people of all ages, races, abilities and incomes
  - ✓ **Forge collaborations:** engage partners in common cause and collective action
  - ✓ **Are vision-driven:** speak strongly to vision and goals of the Town, its partners and funders
  - ✓ **Are ready to go** (really...really... ready...)
    - ✓ **Strong site control**/confident of property owner committment
    - ✓ Public interest/access will be **pledged in perpetuity**
    - ✓ Required leverage/**match identified and committed**
    - ✓ **Demonstrate resilience:** can adapt to change while maintaining impact





# Opportunities

- Second homeowners more than **double the population**
- Retiring owners and exploding property sales mean **Copake is poised to grow**
- Unique enterprises distinguish a **local food hub**
- Rare **biodiversity, both aquatic and terrestrial**, is globally unique and irreplaceable... **BUT ALSO** an unknown asset to many residents
- COVID-19 places a **premium on outdoor recreation** and Taconic State Park is a great anchor





# Challenges

- **Lack of publicly controlled land** limits community access to the waterways
- **Partnerships with property owners are essential** to advance projects
- Limited Town capacity requires **commitments from volunteers**
- Trail ideas **need a meeting of the minds** between residents, property owners and regulators – this takes time
- Copake needs to **build a track record** of securing & managing grants





# Community Profile: Copake's Waterways

Roeliff Jansen Kill	Robinson Pond	Bash Bish Brook	Taghkanic Creek
			
<ul style="list-style-type: none"><li>• A larger Hudson River tributary</li><li>• Headwaters combine to drain a 212 sq. mi. watershed</li><li>• Extends over 54 miles between Hillsdale and Germantown</li></ul>	<ul style="list-style-type: none"><li>• Included because the Roe Jan flows through</li><li>• High density development</li><li>• Impaired water quality: nutrient-loading, runoff, sediment loading, harmful algal blooms</li></ul>	<ul style="list-style-type: none"><li>• Drains 13-square-mile basin into the Roe Jan</li><li>• Bash Bish Falls is the highest single drop waterfall in MA</li><li>• Accessible by hike from Copake Falls trailhead within the Park</li></ul>	<ul style="list-style-type: none"><li>• Drinking water source for Hudson, NY</li><li>• Recognized trout stream</li><li>• 'Threatened Waterbody' on Lower Hudson Basic Waterbody Priority list</li><li>• CLC Connectivity Study getting underway</li></ul>






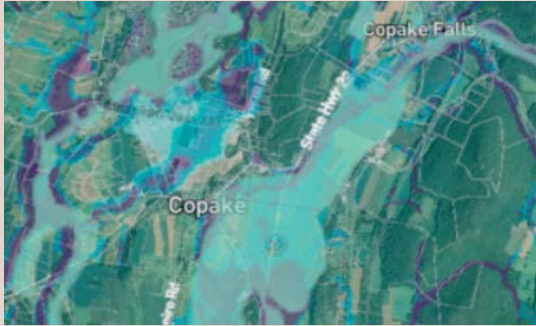


# Community Profile: Copake's Hamlets

Copake	Copake Falls	West Copake	Craryville
 <ul style="list-style-type: none"> <li>• 2015 Hamlet Design and Development Plan</li> <li>• CR 7 Street Improvement in design</li> <li>• National Register-listed Copake Grange &amp; United Methodist Church/Cemetery</li> <li>• Proposed anchor for Copake Spur</li> </ul>	 <ul style="list-style-type: none"> <li>• Gateway to TSP</li> <li>• National-Register listed Copake Iron Works Historic District</li> <li>• Hub of outdoor recreational and cultural activities</li> <li>• Harlem Valley Rail Trail (HVRT) access point</li> </ul>	 <ul style="list-style-type: none"> <li>• Camphill Village, off Route 7 between West Copake and Copake Lake, one of largest self-sufficient communities in country for people with special needs</li> <li>• 220-acre Empire Farm and FarmOn! Fdn.</li> </ul>	 <ul style="list-style-type: none"> <li>• Taghkanic Creek runs through the hamlet</li> <li>• HRVT will extend through</li> <li>• Taconic Hills Central School District Trout in the Schools is a model program</li> <li>• Random Harvest Market, Café and Community Space</li> </ul>





# Community Profile: Copake's Environment

Land Use	Climate Adaptation	Agriculture	Biodiverse Habitat
			
<ul style="list-style-type: none"> <li>• 41.2 square miles (26,112 acres) and 1.3 square miles of water. Residential uses - 68% of total parcels</li> <li>• Little land within municipal control</li> <li>• Partnerships with landowners will be needed for access projects</li> </ul>	<ul style="list-style-type: none"> <li>• Climate adaptation involves extreme weather events, variable winter weather and increasing heat</li> <li>• Integration of resilience measures is critical under new NYS CRRRA Regulations</li> <li>• Stewardship action on small waterbodies is needed</li> </ul>	<ul style="list-style-type: none"> <li>• Unique agriculture amenities: Camphill Village, Hawthorne Valley Farm, Copake Ag. Ctr.</li> <li>• High age of primary farmers and few succession plans</li> <li>• Ag. lands comprise 7,255 acres (28.5%) of land area (only 3.3% of taxable assessed value)</li> </ul>	<ul style="list-style-type: none"> <li>• Part of the Berkshire Taconic Landscape with legacy floodplain forests: unique biodiverse habitat</li> <li>• Designated as one of America's "Last Great Places" by The Nature Conservancy</li> <li>• Expand connections to HVRT via the proposed Copake Spur</li> </ul>





# Copake Waterfront Revitalization Goals

**Copake's Story - Past, Present & Future - Is Woven By Water.**

Our common social spaces and vibrant hamlets are connected by trails and parks, blueways and bikeways.

Longstanding and essential bonds with nature, with each other, and with our community sustain us.

Our diverse environment provides clean air, safe drinking water and bountiful local food.

We adapt to challenges and changing climate, building resilience one backyard at a time.

Copake is a healthy, equitable, resilient and prosperous community inspired by nature at every turn.

**Goal 1.** Increase Passive and Active Waterway Access for the Community

**Goal 3.** Adapt to Change and Foster Resilient Waterways & Landscapes

**Goal 2.** Conserve Our Biodiversity, Scenic Beauty, Environment & Heritage

**Goal 4.** Create Virtual and Physical Linkages Between Our Hamlets





# Goals and Priority Projects

## Goal 1. Increase Passive And Active Access To Our Linked Waterways

We are adding amenities to **engage people with our waterways** including recreation that improves **inclusiveness and accessibility**. Trails, walkways, places to fish and swim, snowshoe and ski will provide abundant ways to **keep us all healthy**

- Help implement **Taconic State Park's Master Plan** and Trails Plan
- Help designate TSP a **Natural Heritage Area**
- Complete the **Harlem Valley Rail Trail**
- Enhance the Copake **Memorial Park**
- Identify **Public Access Point** Improvements
- Support **St. John in the Wilderness** Access Improvement and Trailhead
- Support programs by **Bird Sanctuaries**

## Goal 2. Conserve Our Unique Biodiversity, Scenic Beauty, Environment And Heritage

We protect our **natural resources and habitats for fish, wildlife, & plants**. We protect **historic structures** and examples of **our agricultural heritage**

- Implement the **Roe Jan Stream Crossing Plan**
- Protect **Areas of importance**; Harlem Valley Calcareous Wetlands; Taconic Ridge
- Educate Owners About the Unique Features of Their Land
- Use **Supplemental Standards** to Protect Streams, Floodplains and Wetlands
- Address **Water Quality Impairments** at Robinson Pond, the Roe Jan and Taghkanic Creek
- Support the Upper Taghkanic Creek Watershed Connectivity Plan
- Advocate Designation of Taconic State Park as a Multi-State **"Priority Landscape Area"**





# Goals and Priority Projects

## Goal 3. Advance Climate Adaptation To Foster Resilient Waterways And Landscapes

By incorporating **nature and climate considerations** into everyday decisions we can **reduce flood risk** and manage extreme weather impact resiliently

- Implement the County **Hazard Mitigation Plan**
- Address **Risk of Flooding** Along Roe Jan Kill
- Encourage the Use of Green Infrastructure
- Revise the **Flood Damage & Prevention** Codes
- Mitigate flooding and Advocate for Updated **FEMA Flood Maps**
- Become a Certified **Climate Smart Community**
- Develop a Copake **Resilience Corps**
- Support **Parcel Specific Climate Adaptation**

## Goal 4. Create Virtual And Physical Connections Between Our Vibrant Hamlets

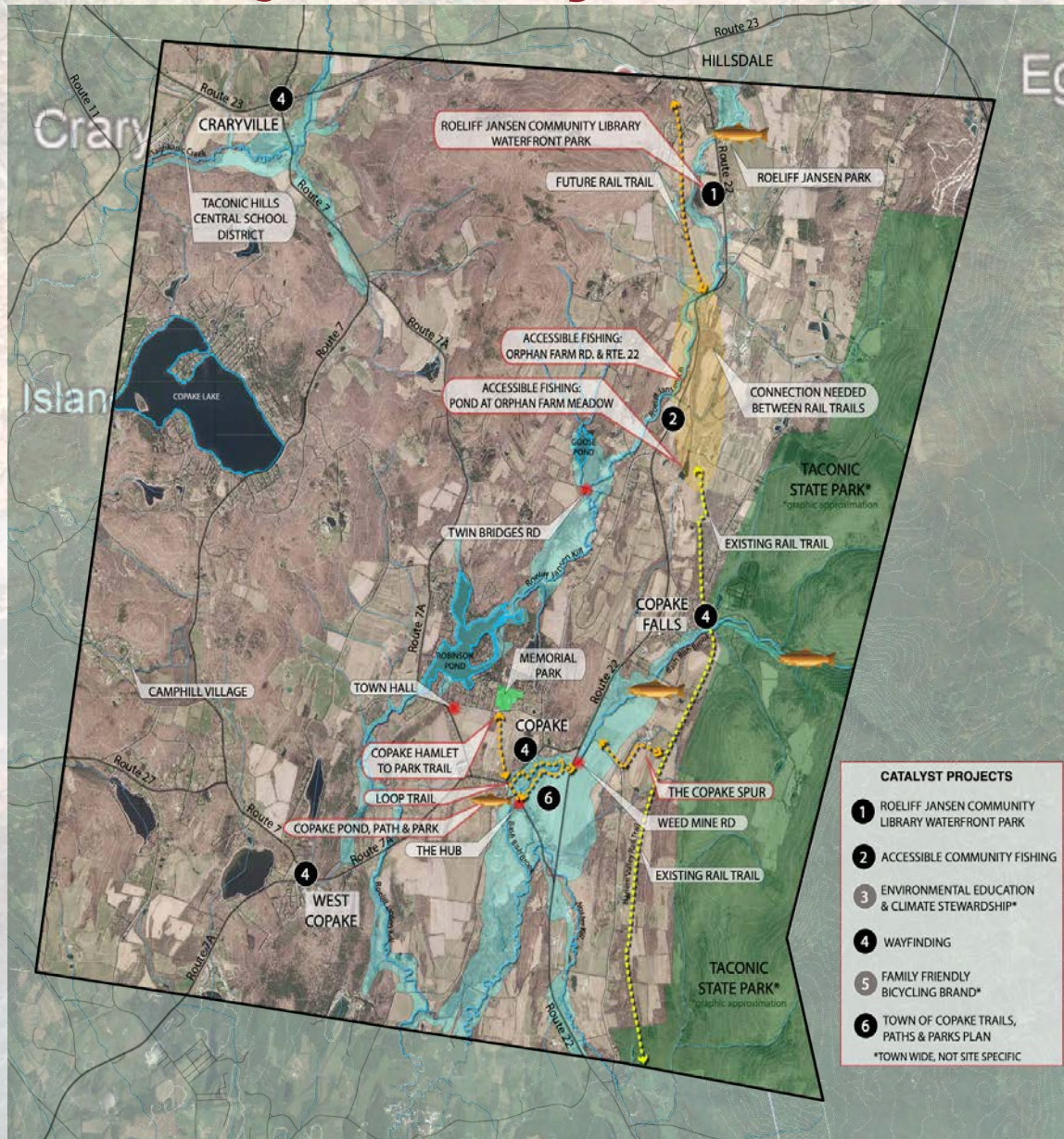
We live, work, and play in **safe, fun, healthy hamlets connected by on-and-off-road trails**. Our **streetscapes** are age-friendly and inclusive. Wayfinding helps people navigate the Town

- Develop **Online Wayfinding** Tools
- Advance **Streetscape** Improvements
- Advance **Gateway** Improvements
- Advocate for **Town-Wide Broadband**
- **Enhance Each of Copake's Hamlets**
- Develop **Informational Kiosks** in each Hamlet
- **Encourage Events** and Promote Amenities





# Catalyst Projects



## CATALYST PROJECTS

- 1 ROELIFF JANSEN COMMUNITY LIBRARY WATERFRONT PARK
- 2 ACCESSIBLE COMMUNITY FISHING
- 3 ENVIRONMENTAL EDUCATION & CLIMATE STEWARDSHIP\*
- 4 WAYFINDING
- 5 FAMILY FRIENDLY BICYCLING BRAND\*
- 6 TOWN OF COPAKE TRAILS, PATHS & PARKS PLAN

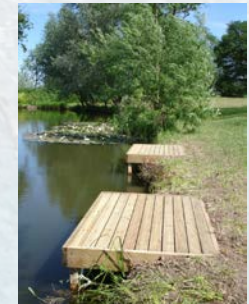
\*TOWN WIDE, NOT SITE SPECIFIC





# Roeliff Jansen Community Library Waterfront Park

- Project will develop a multi-use gathering area along the Roe Jan Creek off Route 22
- Copake will seek funds to develop a master plan that could include a community garden, native riparian garden, park amenities (benches, lights, tables, etc.), a natural playground, rope course, accessible fishing platform or other amenities to draw families visiting the library or visiting





# Accessible Community Fishing



- Taconic State Park Master Plan includes **projects to expand fishing**:
  - Near junction of **Orphan Farm Road and NY Rt. 22**, with parking at existing pull-off
  - Accessible fishing at the pond at **Orphan Farm Meadow**



- Potential **ADA compliant fishing platform** at the Library
- Other locations include **Maple Lane off Route 22**, the bridge over the Bash Bish Brook and Roe Jan Park
- Opportunity to partner with Taconic Hills School District through **Trout in the Classroom**

## Opportunities

Helps safeguard the habitat of native trout, eel, and other fish

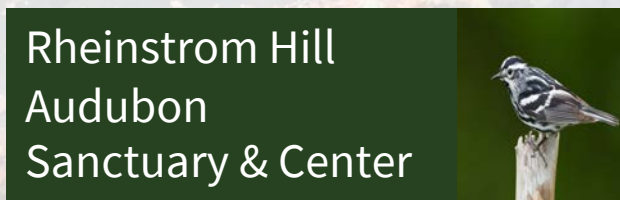
## Challenges

Fishing enthusiasts need to disclose the good spots!

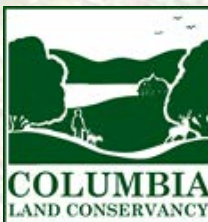
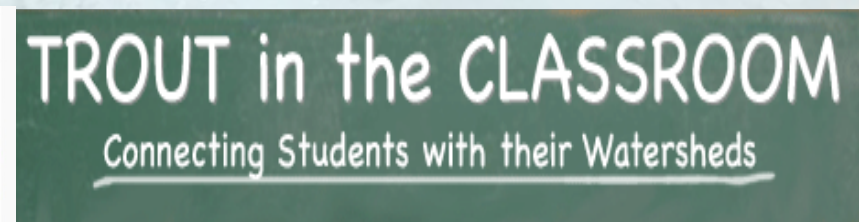




# Environmental Education & Climate Stewardship



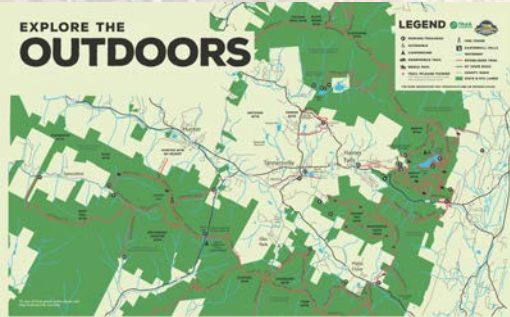
- Working with a **group of devoted partners** Copake will help educate owners about unique features of their land
- Owners will be recruited as **stewards and conservation partners** to protect the ecologically significant features and implement **parcel-specific climate adaptation projects**
- A stewardship approach of coordinated **voluntary action by private property owners** is a fundamental component of Copake's climate adaptation strategy
- The project will encourage landowners to **improve stream buffers and riparian areas** that support healthy floodplains, wildlife habitat, water quality and water temperature
- Programs like **NYS DEC's Trees for Tribs** and **TU's Trout in the Classroom** will engage the next generation of Copakians



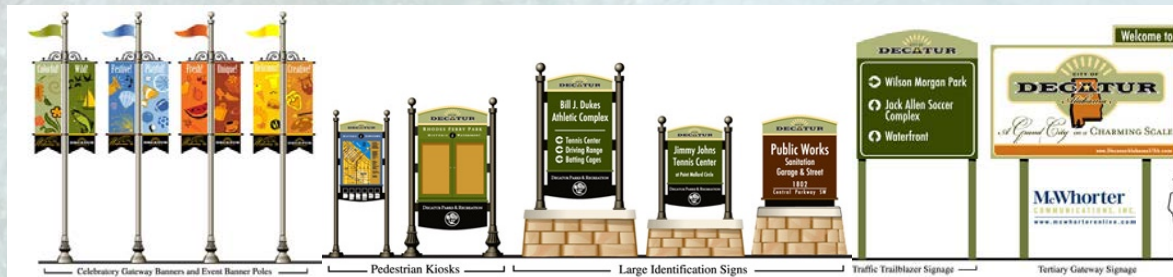


# Wayfinding and Interpretative Signage

## Physical Wayfinding



- Copake will use signage to identify **bike routes that link the hamlets** and create an app that does not depend on cell coverage to provide trip guides
- **Information kiosks** will be designed and constructed as part of a way-finding system (including amenities in each hamlets and at waterway access points).
- Kiosks will **interpret the Town's history** and uniqueness of the Berkshire/Taconic landscape



## Online Wayfinding

An app for multiple transportation modes will support online promotion and wayfinding





# Advance Copake's Family Friendly Bicycling Brand

- Develop a professional marketing plan and brand package to reinforce Copake's identity as a year-round bicycling destination
- The Antique Bike Auction and Antique Bike Ride attracts enthusiasts from across the world
- The Roe Jan Ramble Bike Tour attracts upwards of 200 riders.
- While the Ramble did not occur in 2020 due to COVID-19, their website offers routes using About the Bike Route Planner - Ride with GPS
- Opportunities to launch a fat tire winter race or gathering will be considered



BASH BISH BICYCLE

Fat Tire Winter Racing



*Roe Jan*  
**RAMBLE!** 



Swap Meet



Bike Auction



Antique Bike Ride





# Town of Copake Trails, Paths and Parks Plan

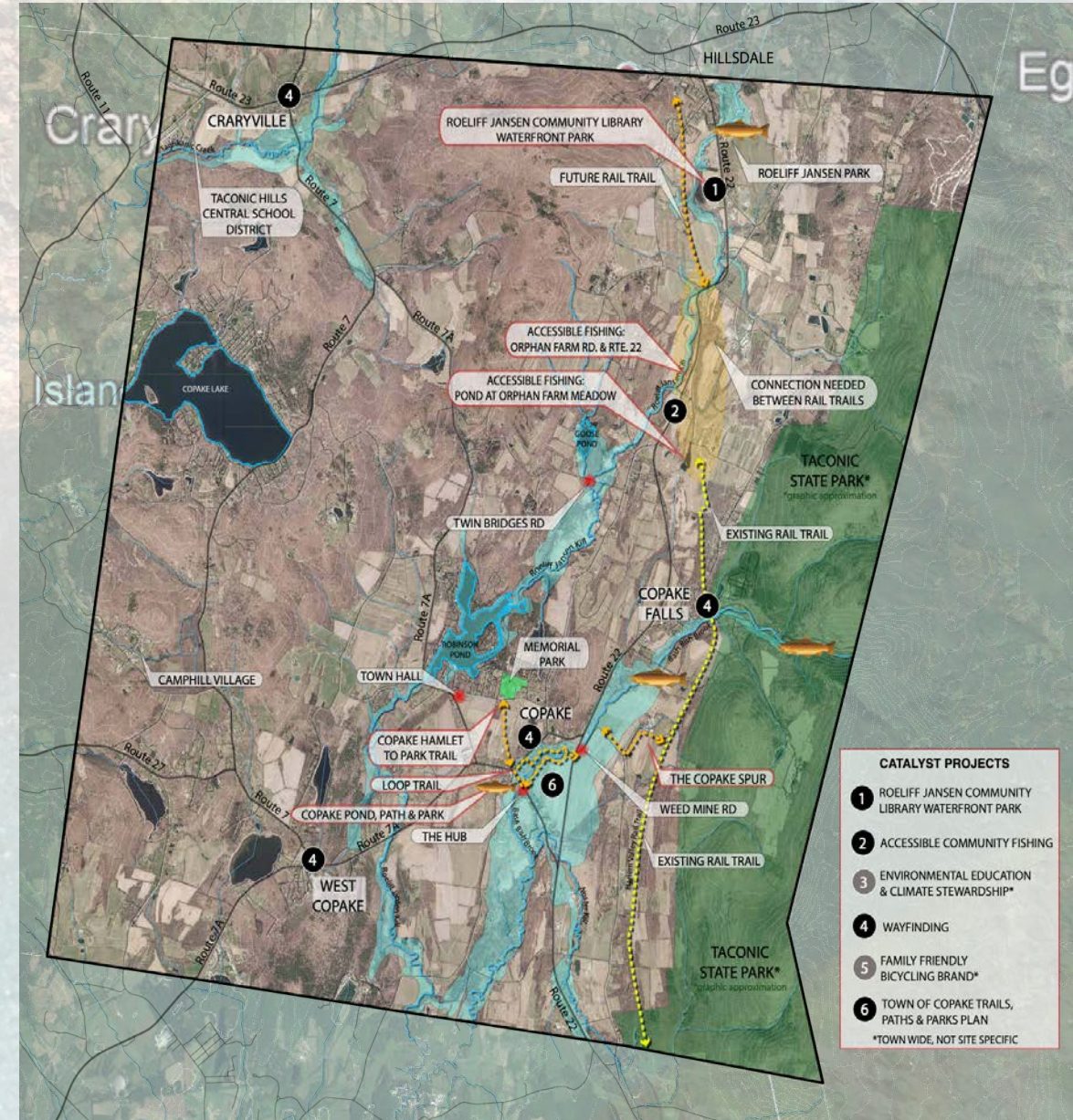
## TRAIL IDEAS

- Copake Hamlet Loop Trail
- Copake Hamlet Pond, Path and Park
- Copake Hamlet to Memorial Park /Town Hall Path
- Copake Spur

Please share your ideas through the

**Trails Ideas Survey**

[www.copakewaterfronts.com](http://www.copakewaterfronts.com)





# Copake Hamlet Loop Trail



**Just long enough to drink a cup of coffee.**

- From the Hub Restaurant the trail wanders along the east side of Bash Bish Brook, turning north just short of Rte. 22
- Crossing a new small rustic bridge, the loop turns and meanders behind the houses along Route 7A
- It emerges onto Route 7A opposite the Octagon House and continues to the Hub on the road



## Opportunities

Accessible route  
for a short stroll

## Challenges

Needs a bridge and  
property owner  
partnerships





# Copake Hamlet Pond, Path and & Park



- The pond is a water source for fire fighting.
- It is surrounded by open farmlands and enjoys beautiful views to the southwest
- Park amenities: simple picnic pavilion, picnic tables, horseshoe pits, and a small playground
- Topography supports an earthen amphitheater
- A dedicated access lane could be provided for the Fire Department and the Bank along their western property line



## Opportunities

A park and path supports the shopping and dining environment

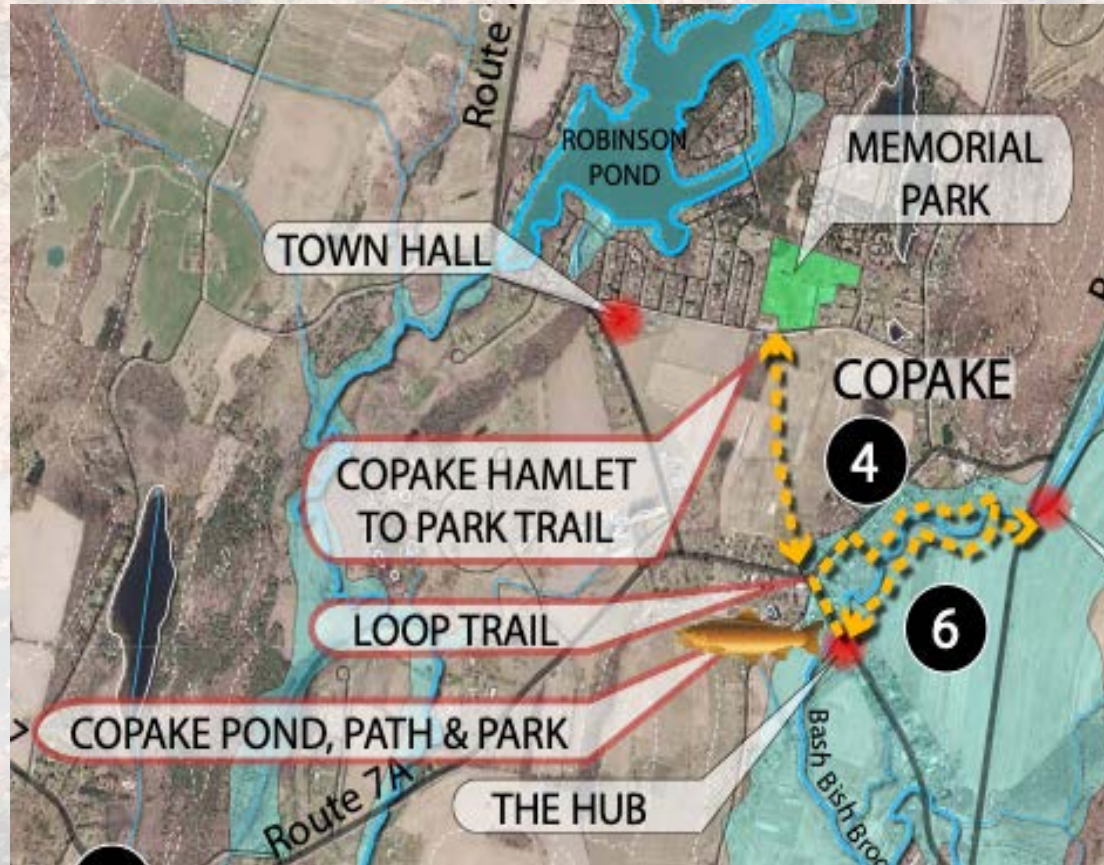
## Challenges

The pond must remain an active water source for firefighting





# The Copake Hamlet to Memorial Park



## The Copake Hamlet to Memorial Park Path

- The path connects the center of the Hamlet of Copake to the Town's Memorial Park and Town Hall on Mountain View Road
- The multi-use path would follow an easement through the Copake Agricultural Center lands

### Opportunities

Creates a safe off-road path between key assets

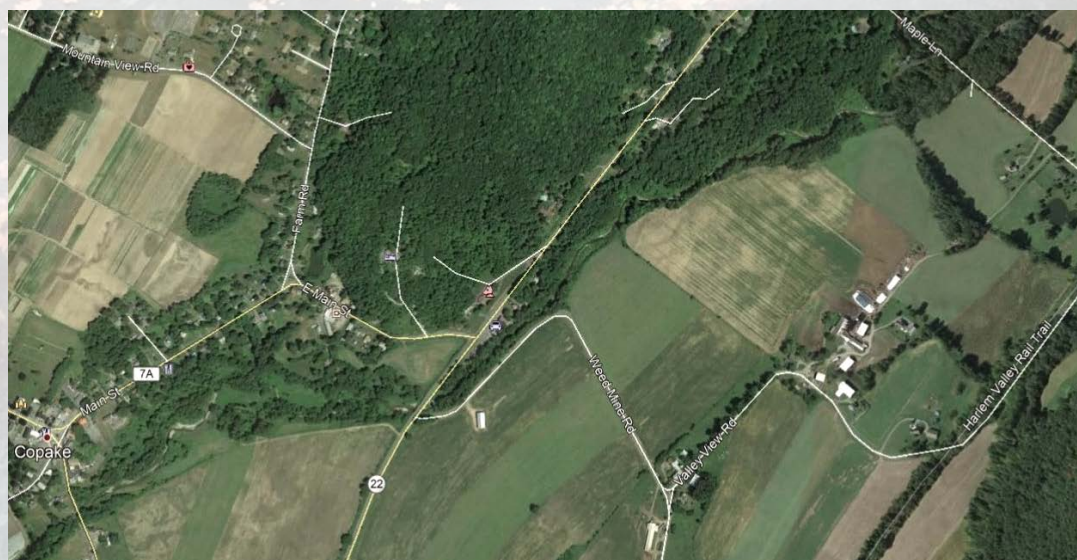
### Challenges

Gates would be needed through deer fences





# Copake Spur



## Connect the Hamlet of Copake with the Harlem Valley Rail Trail.

- The “cow tunnel” under Route 22 and an on-road at-grade crossing have been eliminated from consideration
- The idea to cross Rte. 22 near Valley View Road would disrupt habitat of the endangered Eastern Cottontail
- The remaining alternative is to lay a path under or alongside the Route 22 bridge near Weed Mine Road
- A new bridge to carry HVRT across Rte. 22 at Orphan Farm Road has been funded by NYS

### Opportunities

Support for the project remains strong

### Challenges

Consultations with NYS and the property owner are “on pause”





# Next Steps

- Workshop is available for rebroadcast at [www.copakewaterfronts.com](http://www.copakewaterfronts.com)
- Revise documents based on input and surveys
- Check out current drafts on the website:
  - PART One: Introduction & Community Engagement
  - PART TWO: Community Profile
  - PART THREE: Vision and Goals
  - PART FOUR: Catalysts and Priority
  - PART FIVE: Implementation Matrix (TBD)
  - Copake Atlas
- Develop implementation matrix
- Post draft and final documents for community review

## Provide more input and ideas:

post-workshop survey.

**[SURVEY: IF I HAD \\$10 MILLION....](#)**

trail ideas survey.

**[TRAIL IDEAS SURVEY](#)**

vision & goals survey.

**[DRAFT VISION & GOALS SURVEY](#)**

flood survey.

**[COPAKE FLOOD SURVEY](#)**

## QUESTIONS?

Please contact Roberta Roll  
at [roberta.roll@gmail.com](mailto:roberta.roll@gmail.com)  
or email

**[copakewaterfronts@gmail.com](mailto:copakewaterfronts@gmail.com)**





ROELIFF JANSEN COMMUNITY LIBRARY  
WATERFRONT PARK

FUTURE RAIL TRAIL

ROELIFF JANSEN PARK

Route 22

1

Route 7A

ACCESSIBLE FISHING:  
ORPHAN FARM RD. & RTE. 22

ACCESSIBLE FISHING:  
POND AT ORPHAN FARM MEADOW

GOOSE  
POND

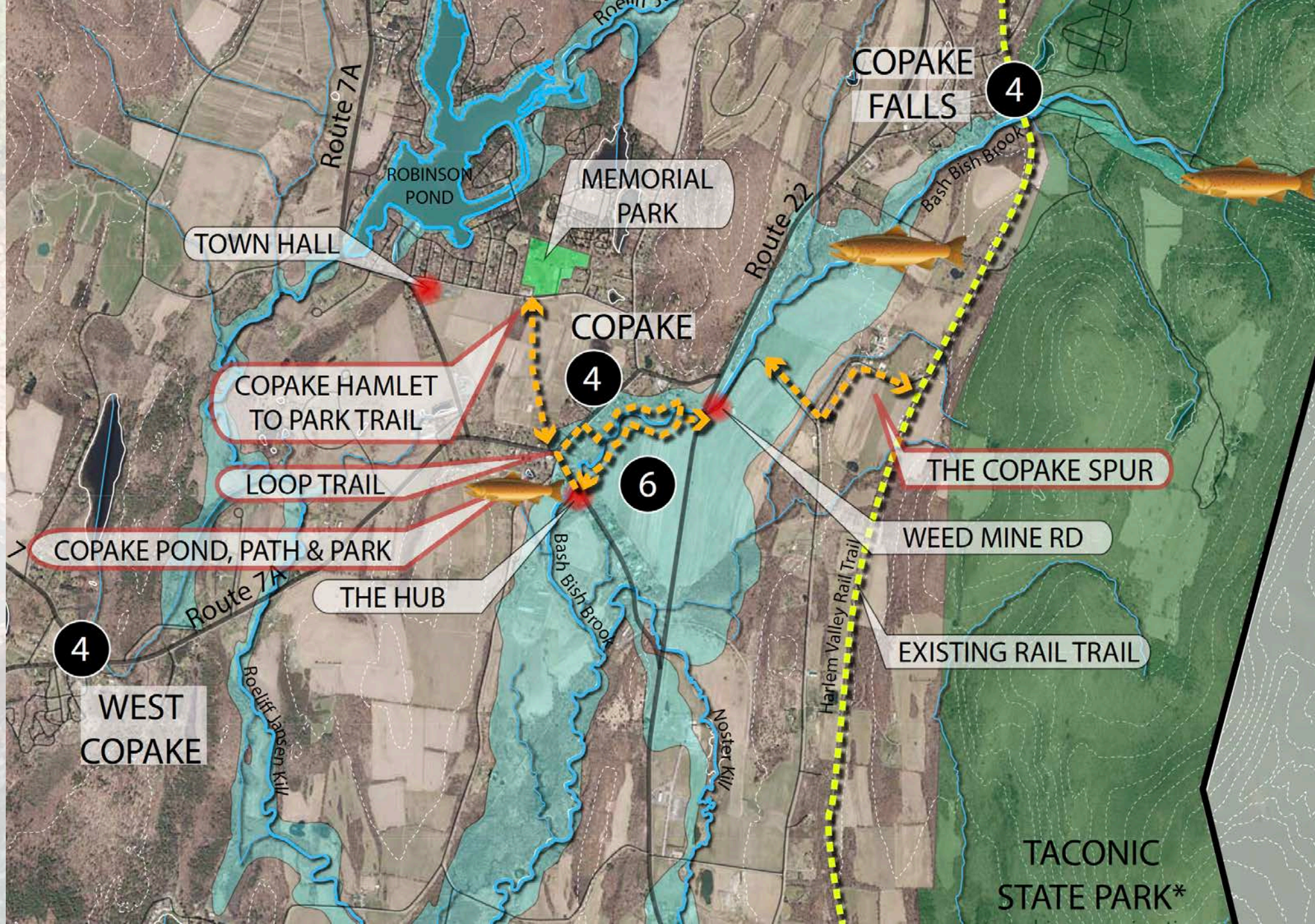
2

CONNECTION NEEDED  
BETWEEN RAIL TRAILS

TACONIC  
STATE PARK\*  
\*graphic approximation

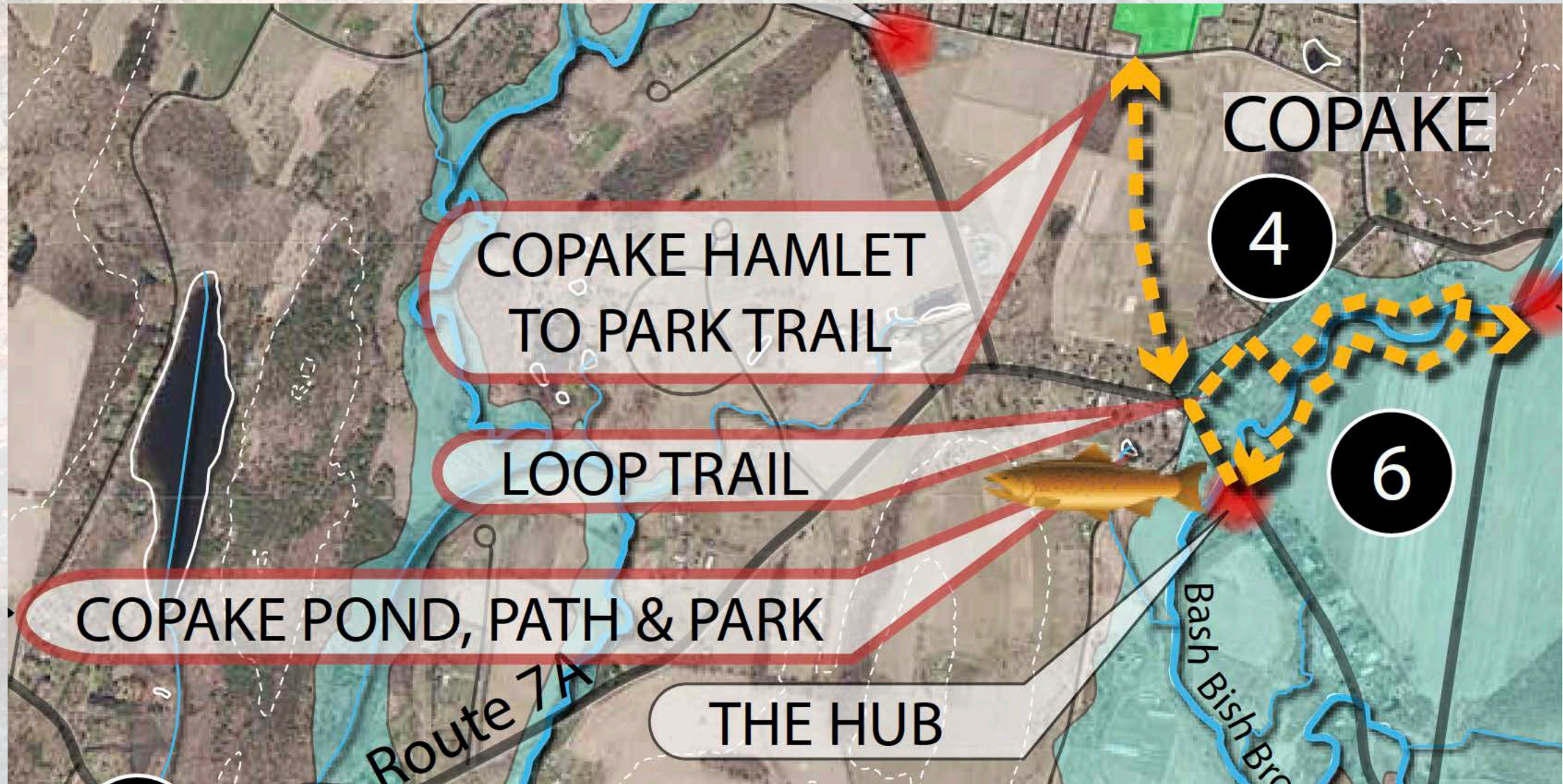








# Copake Hamlet Loop Trail





# Copake Hamlet to Memorial Park

